

ALISON HUBERT

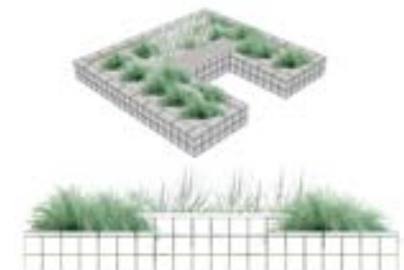
LANDSCAPE ARCHITECTURE PORTFOLIO 2018





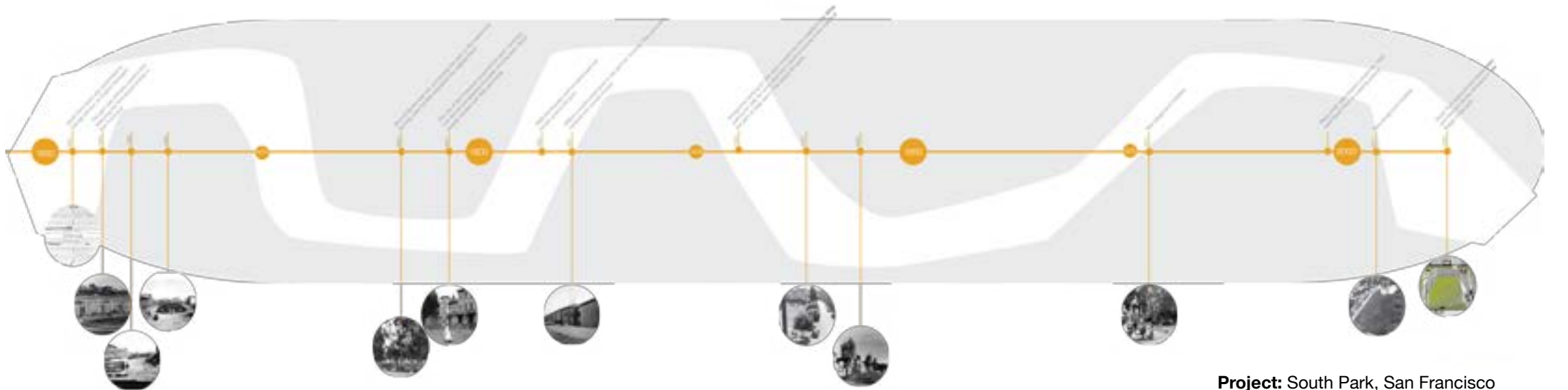
Project: 1201 Tennessee
Project Type: Housing Development
Role: Production Support, Design Analysis
Phases: DD, CD
Method: CAD, SketchUp, InDesign
Office: Fletcher Studio
Client: Devcon

Outline: 1201 Tennessee is a housing development built in 2017. The landscape portion of the project includes a street level midblock passage and a podium level design for residents. My role was to work through construction documentation through 100% CD and massing designs for podium-level elements.



Photographs: Completed Construction, courtesy of Fletcher Studio, of the Dogpatch Rope Walk at ground level and the podium level (immediately above).

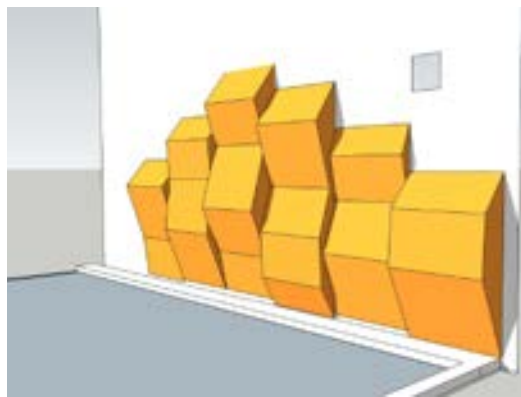
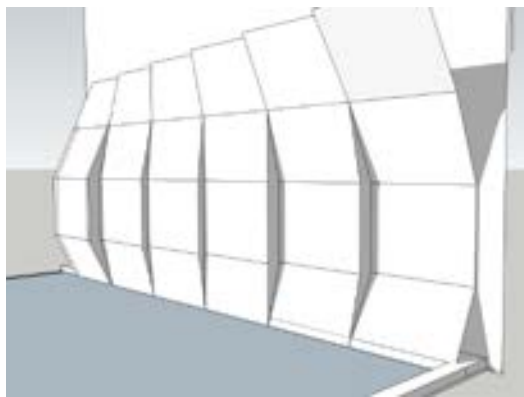
Above Images: Early iterations of split-face CMU wall elements for podium-level residents. From the top, 2 barbeques and a planter wall modeled in SketchUp.



Project: South Park, San Francisco
Project Type: Park Rehabilitation
Role: Production Support
Phases: SD, CD
Method: CAD, Illustrator, InDesign
Office: Fletcher Studio

Outline: South Park, one of the oldest parks in San Francisco, is getting a makeover of materiality, human circulation, and environmental sensitivity. Some historic pieces of the park will remain in place, but much of the site will be replaced. I was a part of the team that put this project through CD's. It is now under construction.

Images: Top, Aerial photograph courtesy of Fletcher Studio. Middle, An Historic Timeline of South park that I created for a fundraiser. Bottom, photograph looking towards 2nd street.



Project: Rivermark Climbing Wall
Project Type: Housing, Recreation
Project Size: ~8'H X ~8'W
Role: Preliminary Design
Phases: CA
Method: SketchUp
Office: Fletcher Studio

Outline: A quick, last minute design implementation request from the client: a children's rock climbing wall. I worked on the original design concepts.

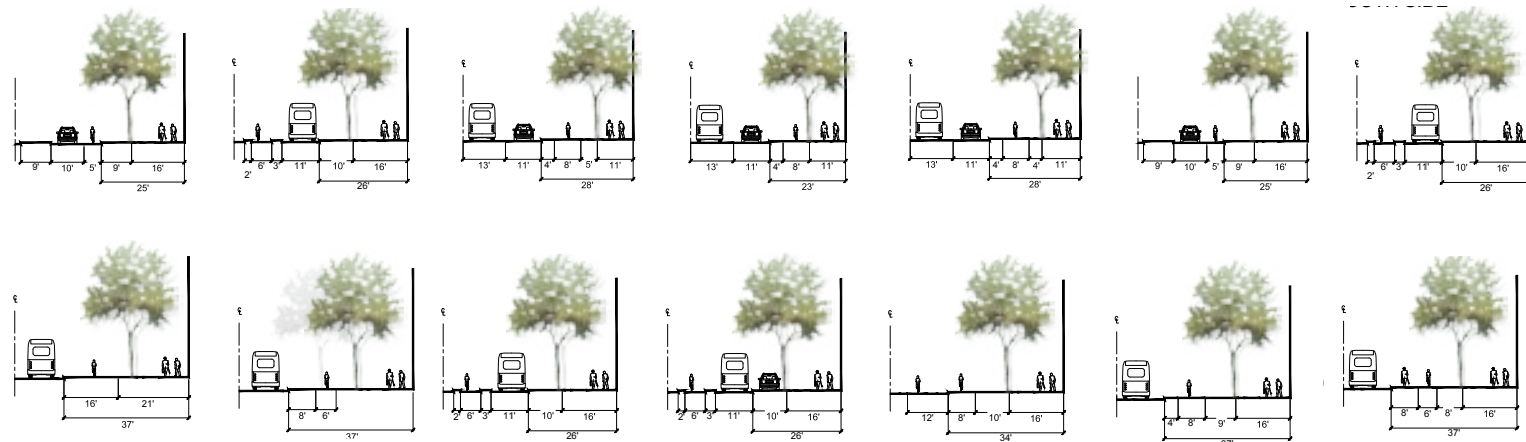
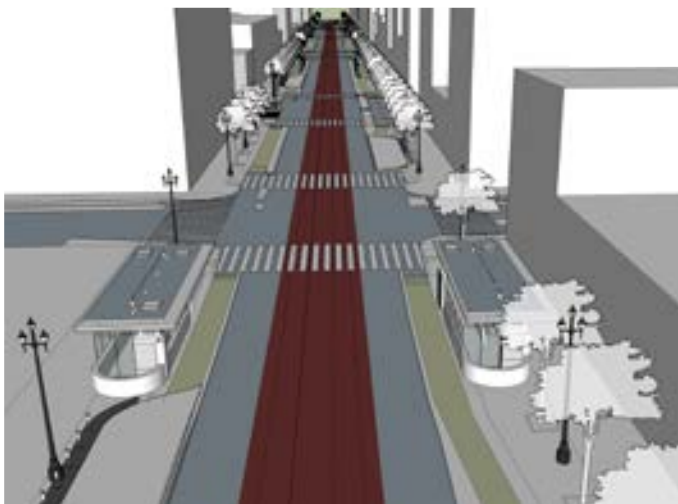
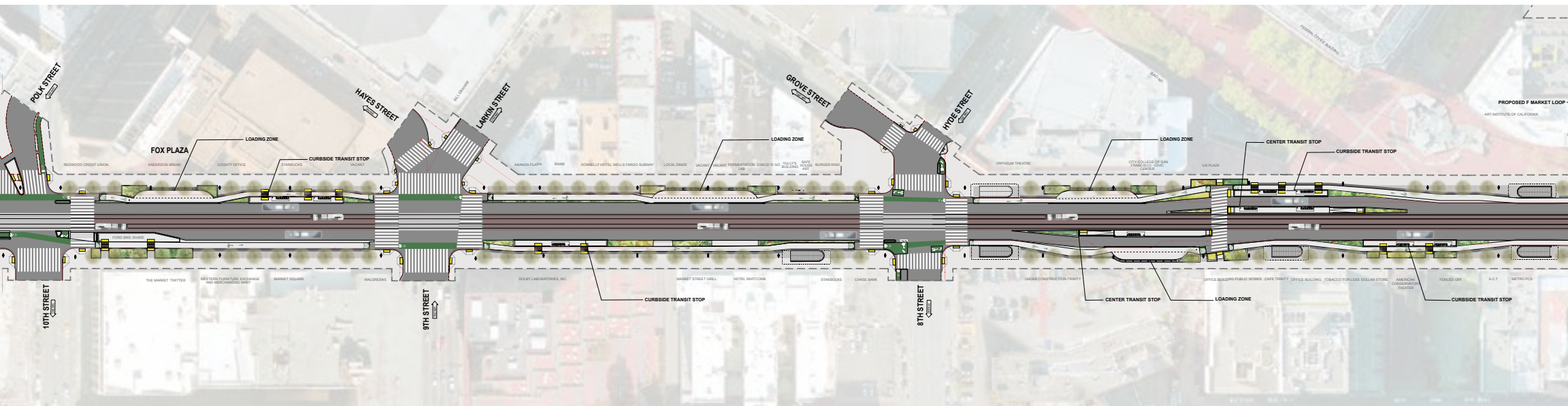
Images: Top, courtesy of Fletcher Studio. Bottom, design process via sketchup.



Project: Rivermark 'Cloud'
Project Type: Housing, Design-Build
Project Size: ~20'L X ~20'W
Role: Design Build
Method: CNC and Rivet Guns
Office: Fletcher Studio
Client: David Baker Architects

Outline: I worked with an associate at Fletcher Studio to build this over a long weekend for our Client, who finished on the install. This was another quick project, but rewarding. It's always a pleasure to get your hands dirty.

Images: Top, courtesy of Fletcher studio. Left, The building process began with CNC cut pieces that we had to assemble, organize, punch holes, and rivet by hand. A group of 2-5 of us worked through a long weekend to finish.

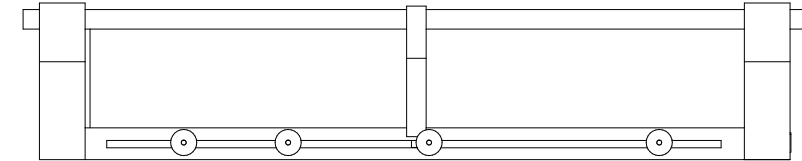
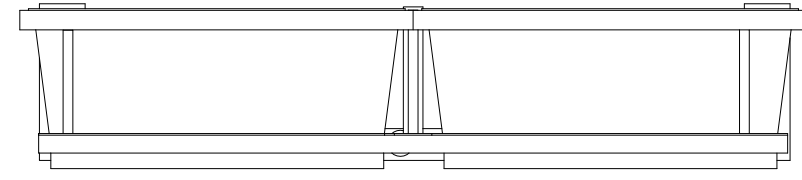
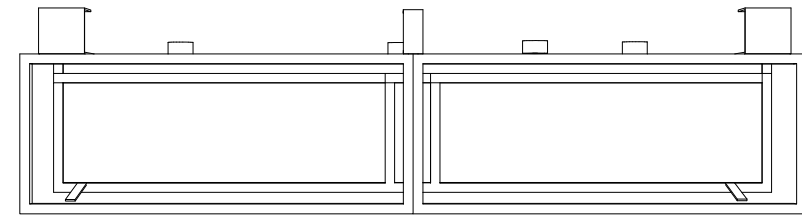
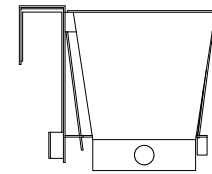
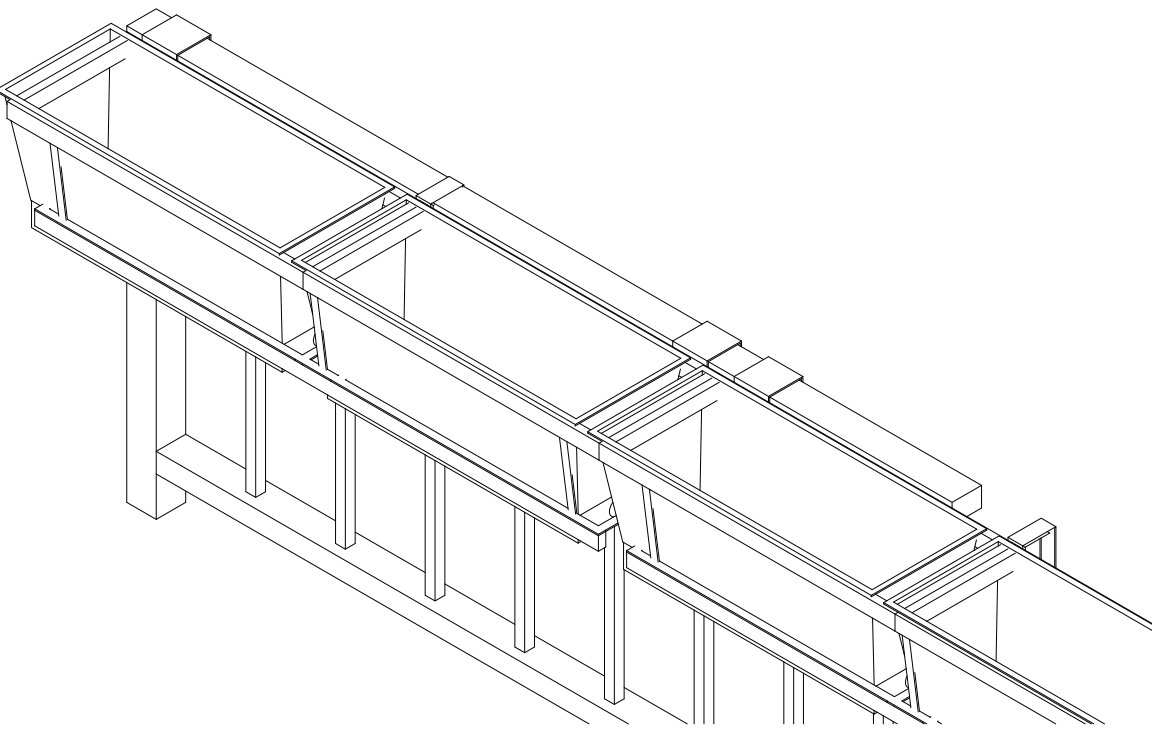


Project: Better Market Street
Project Type: Streetscape Improvement
Project Size: 16 Blocks
Role: Production Support, Design, Analysis
Method: CAD, Illustrator, SketchUp, InDesign
Office: San Francisco Public Works

Outline: Moving from Halprin-Era corridor design as well as the Safer Market Street Improvements that redirected most traffic off of the street, we are designing a sidewalk-level bicycle path and widening the sidewalks along San Francisco's beloved Market Street. This will displace private vehicles on the street to improve all other circulation. The historic brick paving and London Plane Trees will be replaced with materials better-suited to the area.

This project will take quite some time to complete and requires coordination with bus and transit lines, vehicular traffic, commuter and tourist pedestrian circulation, all utilities needed to run these and historic sub-sidewalk basements.

Shown Above: Illustrative Plan of the Civic Center Neighborhood (top) created for a Community Meeting in March of 2018. I worked on this with Tara Singh of SFDPW. Also shown are a 3D view created for Owlleft and tree analysis sections (middle right) of this same corridor around Civic Center.



Project: Hallidie Plaza
Project Type: Plaza “Makeover”
Project Size: One Plaza
Role: Design, Field Measurements, Planting
Method: CAD, SketchUp, InDesign
Office: San Francisco Public Works

Outline: Another Halprin-Era design retrofit, at the entrance to Powell Street Bart in San Francisco. Tony Esterbrooks of San Francisco Public Works and I were tasked with configuring a layout for planter boxes to be hung along the railings of Hallidie Plaza as Phase 1 of a three phase design project to update the space. The boxes were purchased by our director and we measured the existing railings and designed brackets to hold the planters, as well as specified which species of

plant we thought would be hardy, bright, and low maintenance enough to withstand Hallidie Plaza. Phases 2 and 3 include replanting and re-irrigating the terraces and activating the space with more furniture.

Shown Above: Top, Sketchup Mock-Ups of the brackets holding planters. Shown lower is the progression of our work, the images to the left are before the planters and images to the right were after. The final image is me with a local resident who was very happy with our work.

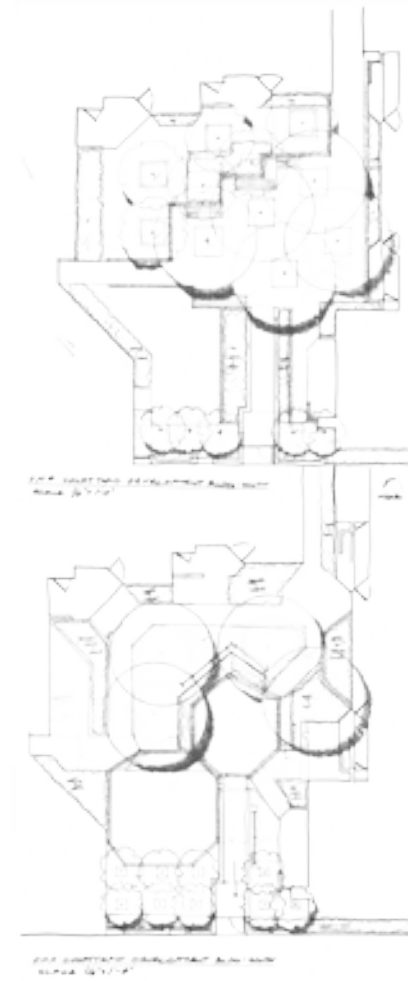
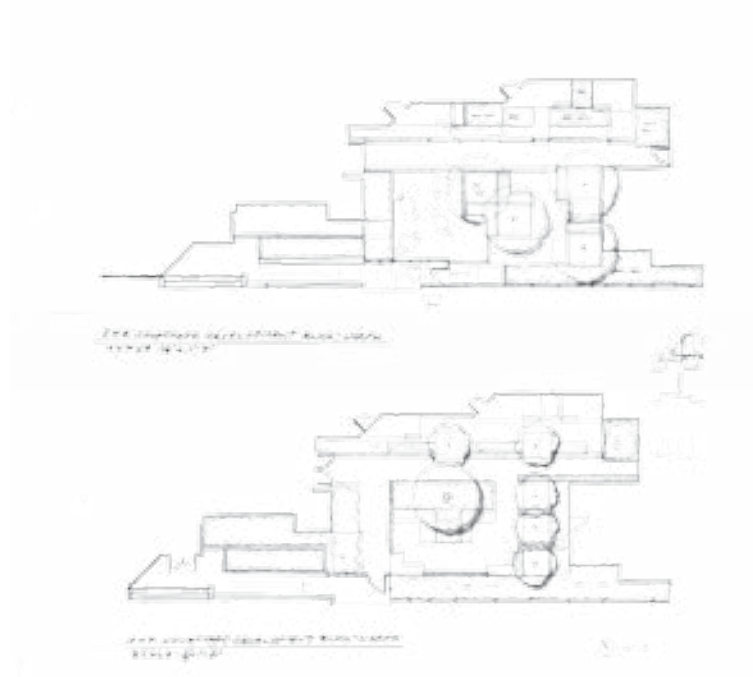
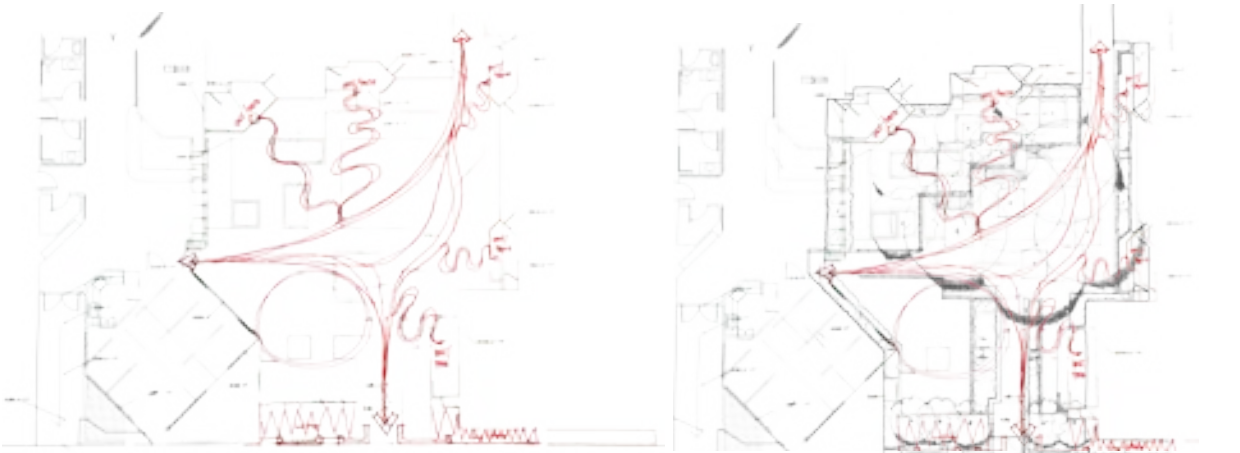
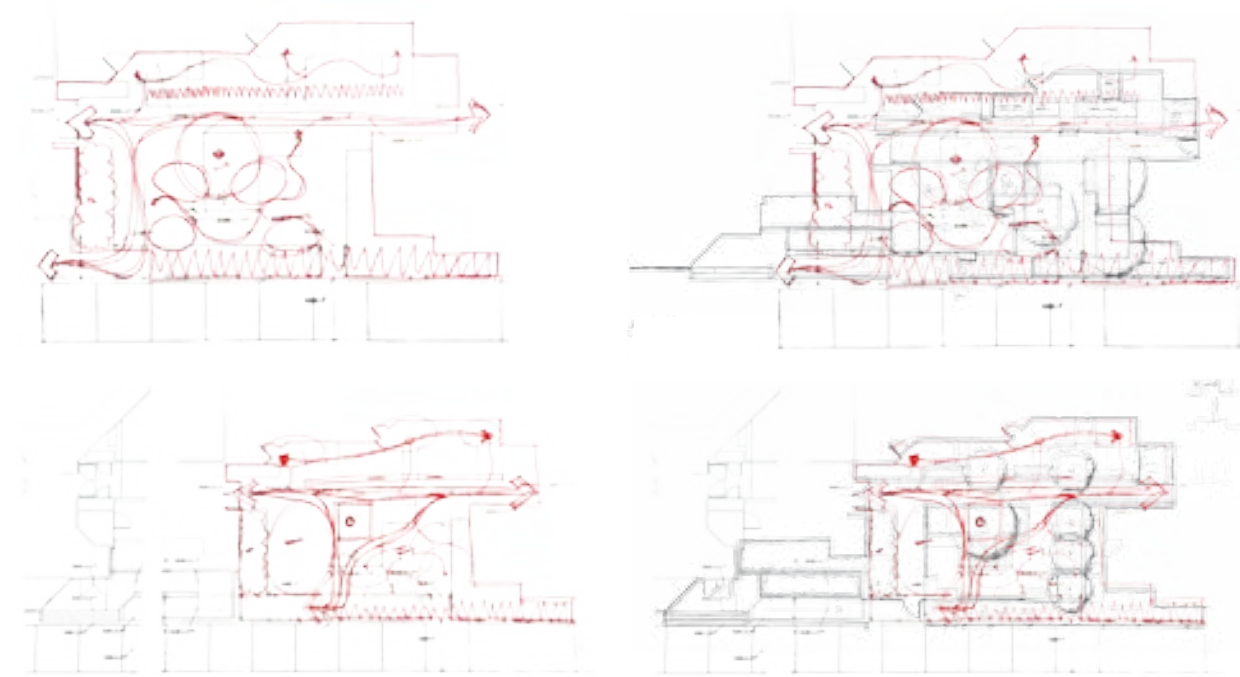


Project: Presidio Parkway
Project Type: Parkway Planting Design
Project Size: 40 acres
Role: Production Support
Phases: CD
Method: CAD
Office: Merrill Morris Partners
Client: The Presidio Trust + CalTrans

Outline: A Parkway redesign at the base of the Golden Gate Bridge in San Francisco that incorporates endemic native plants, bioswales, raingardens, wildlife sensitivity, recreation trails, and California Highway construction constraints.

Top Images: Current site conditions, Photos courtesy of <http://www.presidioparkway.org/gallery/>

Lower Image: Full Planting Plan, Early 2016, drawn at 80 Scale



Project: Oak Grove N + S
Project Type: Housing Courtyards
Role: Project Management + Design
Phases: SD (current)
Method: Trace Paper + Pens
Office: Merrill Morris Partners

Outline: An elderly housing construct ready for material rehabilitation and an overall style update. We were tasked to create quick courtyard concepts to match the conditions of the site. These were presented to our friends at Okamoto Saijo Architects and welcomed warmly. These drawings will be refined and brought into CD phases in the next few months.

Sketches: Drawings to the left are concept diagrams representing human circulation and boundaries. Drawings toward the right were given to the client. Drawings on top represent the North Building. Drawings on bottom are the South.



Project: Pickathon Wood Stage
Project Type: Design Build
Role: Build Team
Year: 2012
Method: Tree Debris + Metal Fasteners
Office: Communitecture

Outline: Pickathon is an acoustically inclined music festival in Corvallis, OR hosted on the farm of a man who just loves music. It began in the early 2000's and since has hosted very big-name artists including Feist and Angel Olsen (shown above, courtesy of youtube) as well as smaller bands like Lake Street Dive and Y La Bamba. We built this stage out of necessity, with a little inspiration by the forest around us and got free weekend passes in exchange.